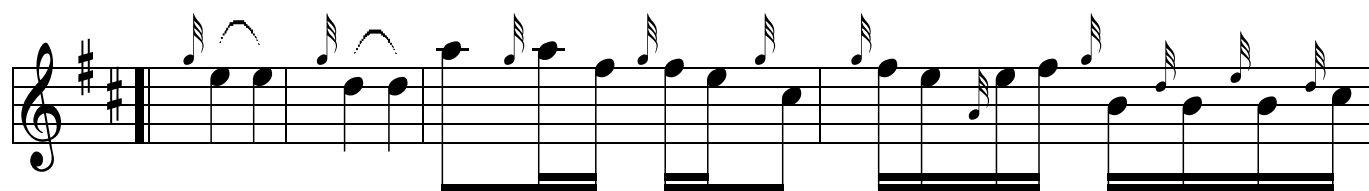
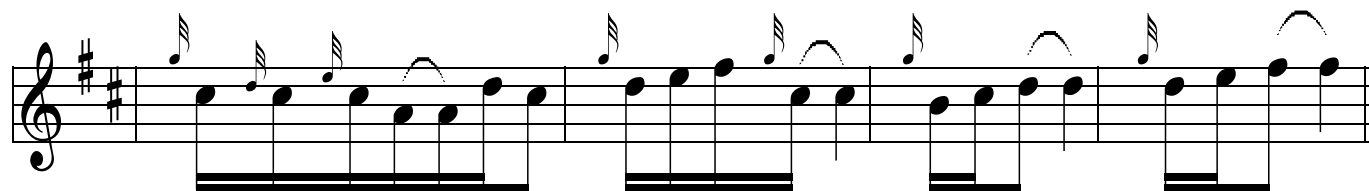
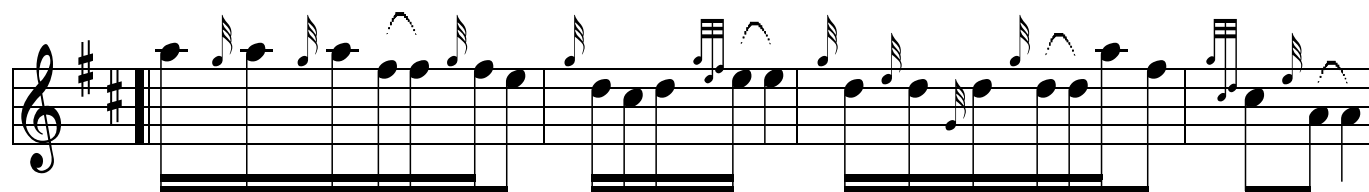


The image displays a musical score for a piper's harmonies. It consists of ten staves of music, all written in treble clef. The key signature is one sharp (F#), and the time signature is 2/4. The first staff begins with a double bar line and a repeat sign. The music is characterized by a steady eighth-note accompaniment in the lower register, with various melodic lines in the upper register. Some lines feature slurs and ties, indicating phrasing. The score concludes with a double bar line and repeat dots.

Steam Train to Mallaig - 1st HARMONIES (Pipe 3) page 2 of 2 Mary-Ann MacKinn



Indiana Caledonia Pipe